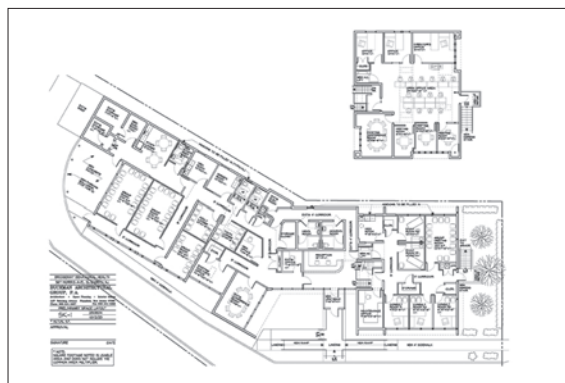
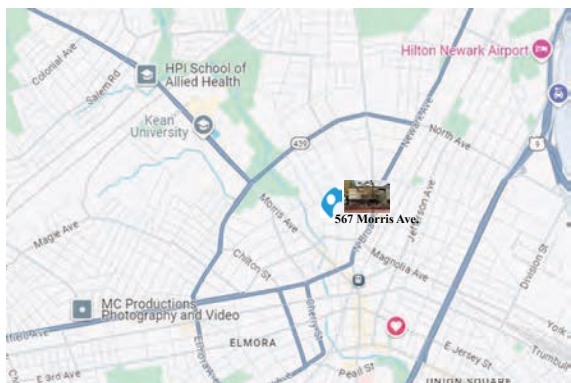




The Next 50 Years Begin Here!

**The Center for Outpatient Services
and Substance Use Treatment**

567 Morris Avenue, Elizabeth, NJ 07208





The Center for Outpatient Services and Substance Use Treatment

567 Morris Avenue, Elizabeth, NJ 07208

FACT SHEET

- Purchased by Bridgeway in 1995
- Centrally located, walkable to Kean University, Union Train Station
- Located on several public transportation routes
- 8,000 square foot facility features 38 off-street parking spaces

The renovated Center will offer separate reception and waiting rooms for young people and adults, 8 individual meeting rooms, 8 group therapy rooms, 2 exam rooms, 2 medication rooms, 6 individual offices, 12-desk common office area, and 4 rest rooms.

Services at The Center will include:

- Urgent care services including walk-in hours 7 days a week, for Union County residents ages 18 and up, who are experiencing mental health and co-occurring issues, with access to clinicians and prescribers within 24-48 hours
- Comprehensive behavioral health services, individual and group therapy, for Union County residents ages 13 and up, to include:
 - Mental health counseling for individuals, groups and families
 - Substance use disorder treatment/medication assisted treatment
 - Medication management
 - Case management
 - Co-occurring mental health/substance use disorder services
- Assessment and case management services; referral to other Bridgeway Community Support Services, for example, Homeless Outreach and Supportive Housing; Supported Employment; Supported Education; and Justice Involved Services. Also, providing referrals to services provided by local community-based organizations.

www.bridgewaybhs.org | 908-355-7886